

SAP S/4HANA DIGITAL SUPPLY CHAIN - STRATEGIE & ROADMAP: NEUESTE TRENDS UND INNOVATIONEN FÜR IHR "LOGISTIK BUSINESS"

MATTHIAS MARTENS // 4. MAI 2022

IMAGINE
MITTELSTANDSFORUM 2022

AGENDA



1

SAP Solution
Strategy
Digital Supply Chain

2

SAP Portfolio
„Deliver“
Warehouse &
Transportation

3

Deployment-
Strategy
Digital Supply Chain

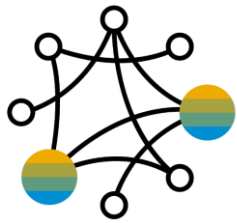
4

SAP S/4 Public
Cloud & Digital
Supply Chain

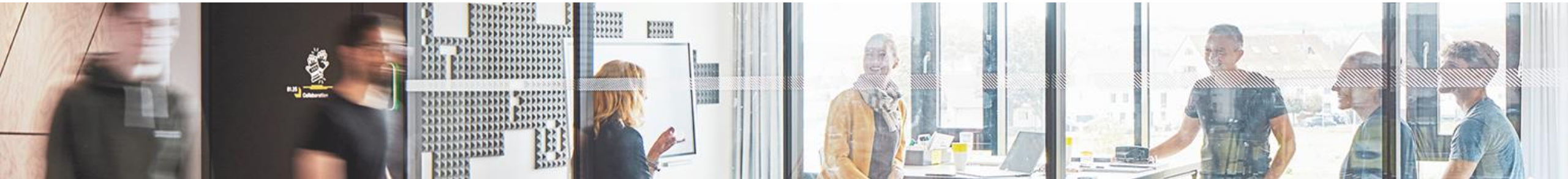
5

Take Aways

1



SAP SOLUTION STRATEGY DIGITAL SUPPLY CHAIN



Take the lead

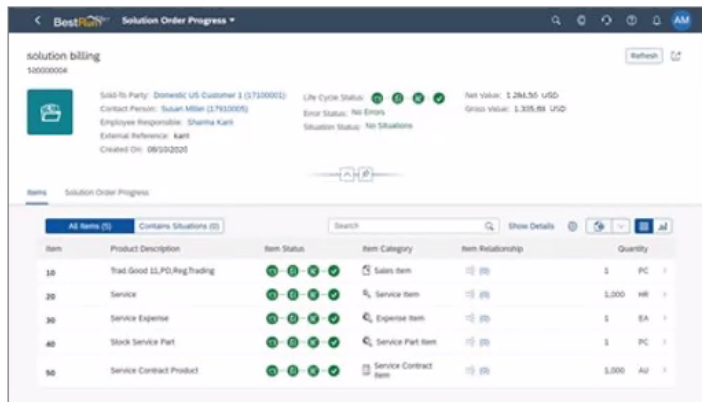
Industry innovation for top-line, bottom-line and green-line growth



Top line

Enable new business models

Transforming business into selling bundled solutions, combining products, services, projects and subscriptions/outcome-based services.



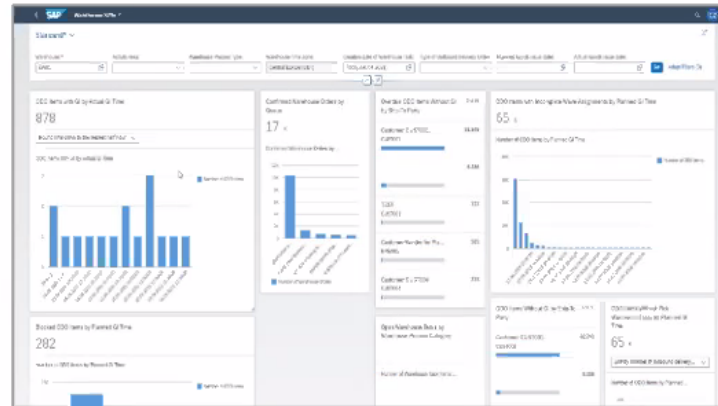
Solution Business



Bottom line

Unlock efficiencies

Provide intuitive user experience, streamlined workflows and embedded artificial intelligence to continuously improve efficiency.



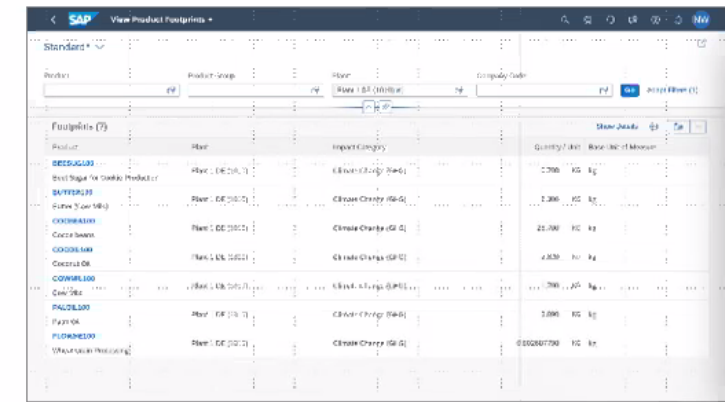
Embedded Warehouse Mgmt.



Green line

Drive sustainability

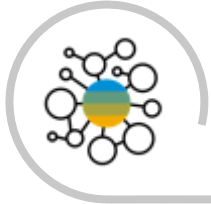
Quantify, analyze, and act on real-time data across the end-to-end operations to establish a "green line" through the entire business.



Product Footprints

Effective E2E business steering, agile and efficient processes including embedded compliance based on a single business foundation

NEW REALITY IN LOGISTICS



Supply Chain Resilience

Operate supplier networks to hedge risk and flexibly engage external resources where required



Supply chain efficiency & Logistics 4.0

Optimize the flow of goods, increase asset and warehouse utilization and address sustainability goals



Supply chain integrity and sustainability

Create a digital twin of fulfillment building on asset insights, stakeholder collaboration and uniquely identified products.



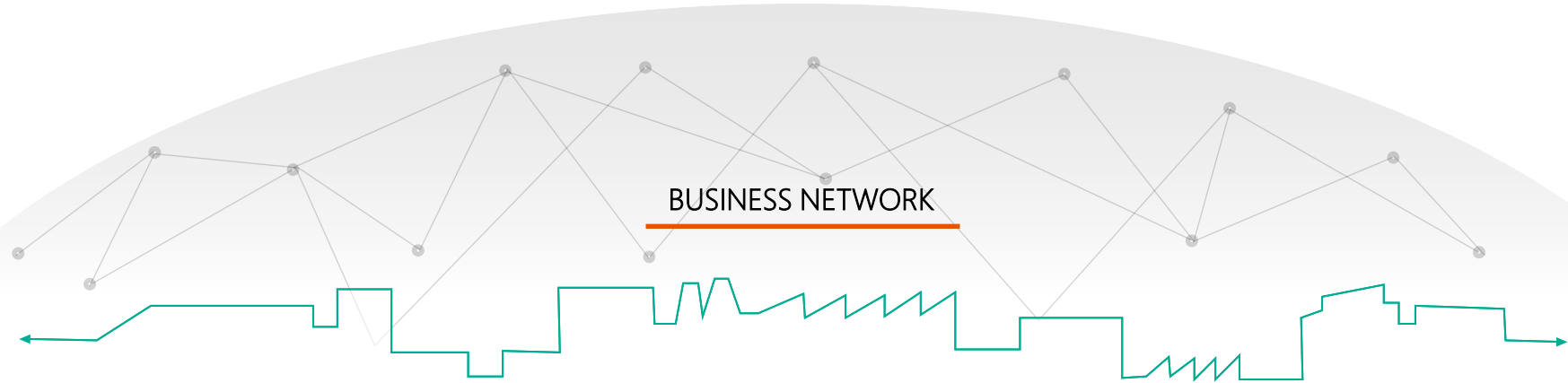
Delightful delivery experience

Fulfill the promise of omnichannel commerce with state-of-the-art logistics execution and customer service.

SAP Digital Supply Chain in the **Intelligent Enterprise**



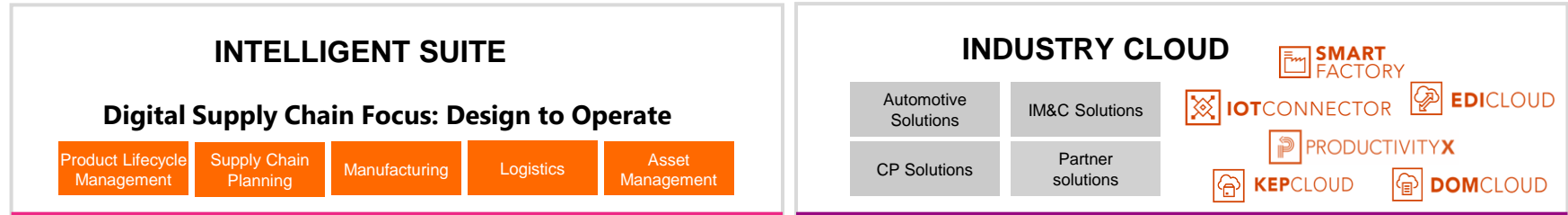
BUSINESS
PROCESS



Run a Resilient, Sustainable Supply Chain from Design to Operate

EXPERIENCE MANAGEMENT

APPLICATIONS



SUSTAINABILITY MANAGEMENT

TECHNOLOGY



INDUSTRY 4.0

THE INTELLIGENT LOGISTICS ENTERPRISE



Intelligent Insights

Holistic
Visibility

Networked
Operations

Seamless process
execution

Itemized
Tracking &
Reporting

CHALLENGE DIGITAL SUPPLY CHAIN



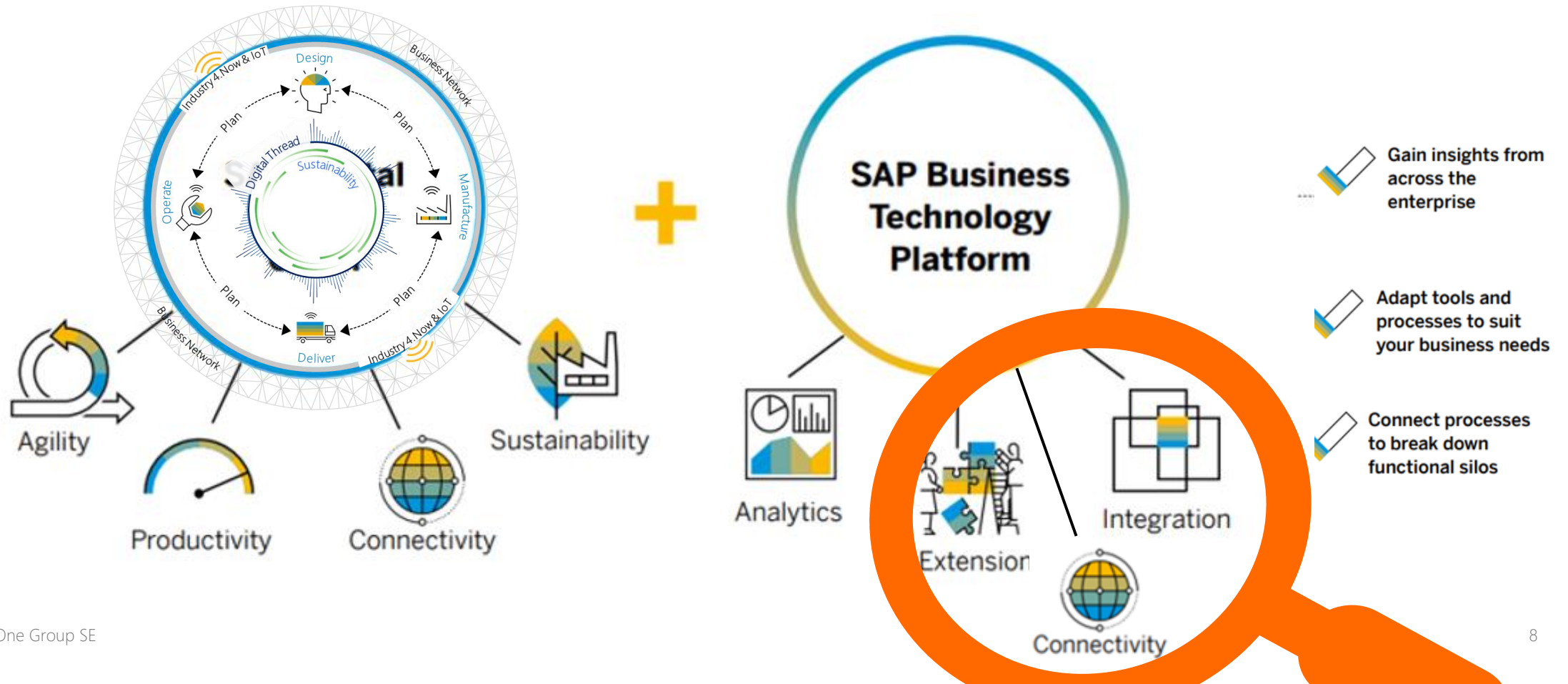
Real **WACHSENDE** Supply Chain **KOMPLEXITÄT**

SAP DIGITAL SUPPLY CHAIN UND BTP



IOT-DRIVEN SUPPLY CHAIN:

“Create a data-driven supply chain management solution that would make use of IoT technologies and **extended cloud functionalities**”



SAP BTP: SKALIERBARE PLATTFORM



7x



Kombinierte Nutzung von IoT-Daten und Business Daten mit innovativen UI



Integration von Cloud Extended Functionality in SAP S/4 (z.B. Track&Trace Status über CloudCarrier Services oder Orderstatus)



Individuelle APP zur Ergänzung S/4-Funktionalität



Integration von Sensordaten in SAP S/4HANA



AI-basierte Bilderkennung



All for One Industry Cloud Solutions

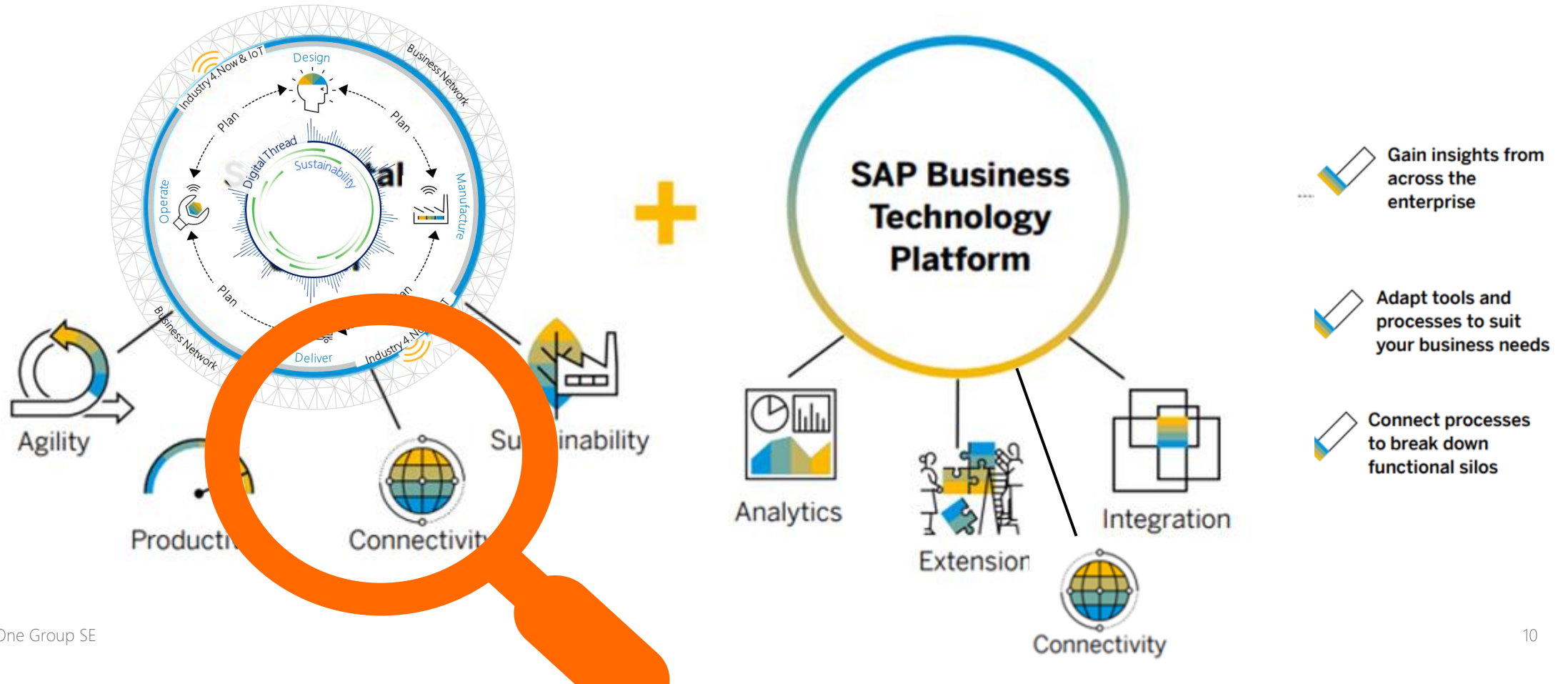


SAP DIGITAL SUPPLY CHAIN UND BTP



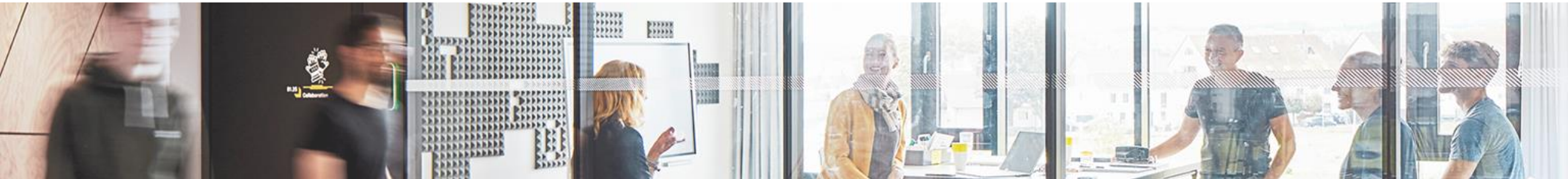
IOT-DRIVEN SUPPLY CHAIN:

“Create a data-driven supply chain management solution that would make use of IoT technologies and extended cloud functionalities”



2

SAP PORTFOLIO WAREHOUSE & TRANSPORTATION

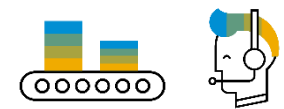
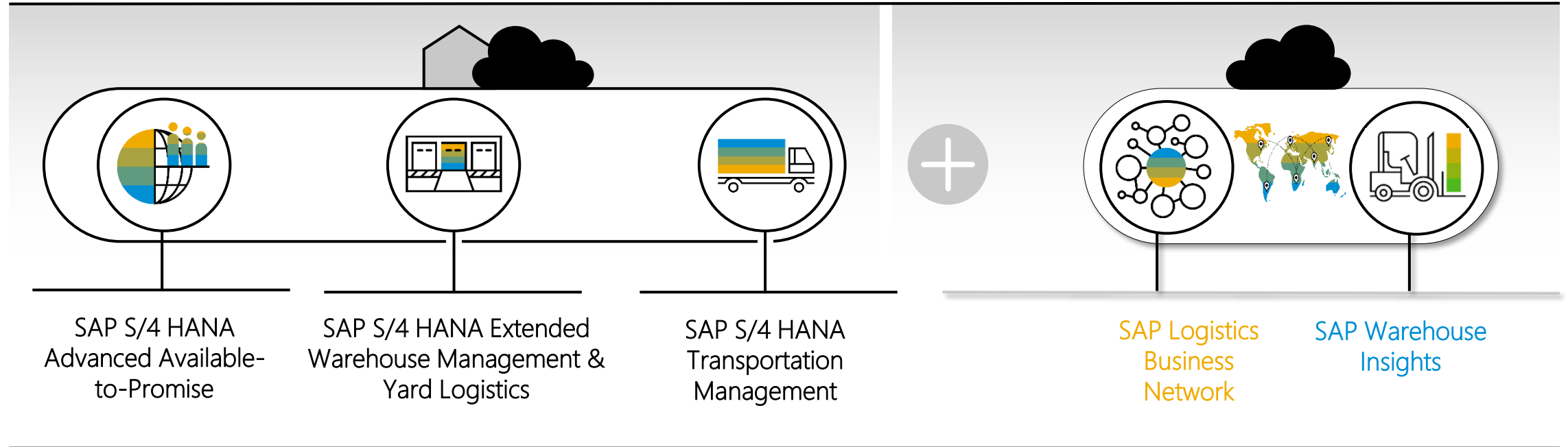


SAP Digital Supply Chain solutions for Deliver

Enables just-in-time consumption creating the product experience by making delivery part of the promise



Digital Logistics Real-time Data



SAP S/4HANA Business Technology Platform



Types of warehouses for SAP EWM



Production Warehouse

- Raw-material handling
- Integration of quality management
- Production supply
- Receipt from production
- Staging and consumption
- JIT- JIS Integration



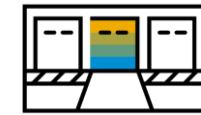
Distribution Center

- Complex process and high volume
- High degree of automation
- Wave management
- Slotting and rearrangement
- Replenishment



Service Parts Warehouse

- Low to very high complexity
- Kitting and value-added service
- High volatility
- Serial numbering
- Heterogeneous product range



Cross-Dock or Transit Warehouse

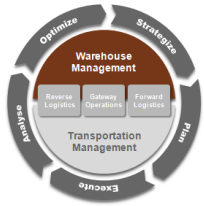
- Regional hubs, gateways, and container freight station
- Air and ocean freight handling
- Unit-load device and container handling
- Receive from and send to airport or seaport (drayage)



From traditional stocking warehouses to flexible multi channel fulfilment centers

SOLUTION DETAILS SAP EWM (ON-PREMISE)

A COMPLETE OFFERING RESULTING FROM SOLID, CONTINUOUS INVESTMENT



CORE PROCESSES

- EWM 5.0
- EWM 5.1
- EWM 7.0
- EWM 7.01
- EWM 7.02

- EWM 9.0
- EWM 9.1
- EWM 9.2
- EWM 9.3
- EWM 9.4
- EWM 9.5 / S/4HANA 1709
- S/4HANA 1809
- S/4HANA 1909
- S/4HANA 2020
- S/4HANA 2021

CROSS

SUPPORTING AREAS

Inbound Processing

- ASN data receiving, validation
- Transportation unit mgmt.
- Goods receipt
- Putaway bin determination
- Internal routing
- Deconsolidation
- Putaway
- Returns / reverse logistics
- Goods receipt optimization
- Advanced returns mgmt.
- Direct receipt from production
- Lean Warehouse Clerk Inbound
- E-commerce Returns
- Direct EWM-PP synchronous postings (embedded)



Storage & Operations

- Slotting
- Rearrangement
- Inventory counts / record accuracy
- Replenishment
- Scrapping
- Kit-to stock
- Warehouse Billing
- Stock consolidation
- ABC analysis
- Pack warehouse stock



Outbound Processing

- Order deployment
- Route determination
- Transportation unit mgmt.
- Wave management
- Wave release simulation
- Picking bin determination
- Warehouse order creation
- Picking, packing, staging & loading, Goods issue
- Pack Outbound Deliveries
- Kit-to-order
- Direct outbound delivery
- Production supply
- Production staging and consumption
- Lean Warehouse Clerk Outbound
- Pick to Cart
- Support of tugger trains
- JIT integration

- Transportation cross docking
- Pick from goods receipt/ push deployment
- Yard management
- Shipping Cockpit

- Labor management
- Opportunistic cross docking
- Merchandise distr. X-docking
- Stock-specific unit of measure
- Task interleaving

- Semi-system-guided work
- Transit warehousing
- Attachment services
- Plant Maintenance integration new

- Warehouse Monitor
- RF / RFID enablement
- Quality inspection
- Import / export integration
- EH&S integration
- Migration tools
- Pick by Voice
- Pallet building algorithm
- Seamless pallet tracking
- IUID support
- Direct EWM – ME integration
- Enhanced MES/DMC integration new

- Packaging specification
- Batch management
- Serial numbers
- Catch weight
- Material Flow System
- Warehouse cockpit
- Dock Appointment Scheduling
- ERP transportation integration
- Direct TM – EWM Integration

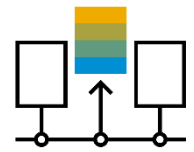
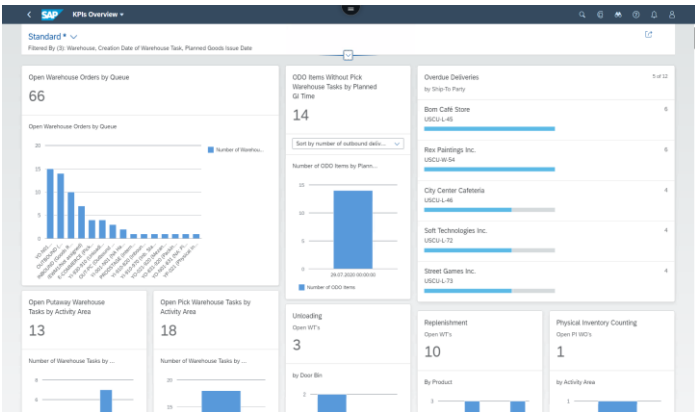
- Advanced Shipping & Receiving new
- Claims & Returns
- Multiple EAN
- Cartonization
- Best-practice content
- Warehouse Insights as Add-On
- Warehouse Analytics
- More synchronous postings (embedded)
- RF WebGUI new

ANALYTICS AND MONITORING WITH SAP EWM



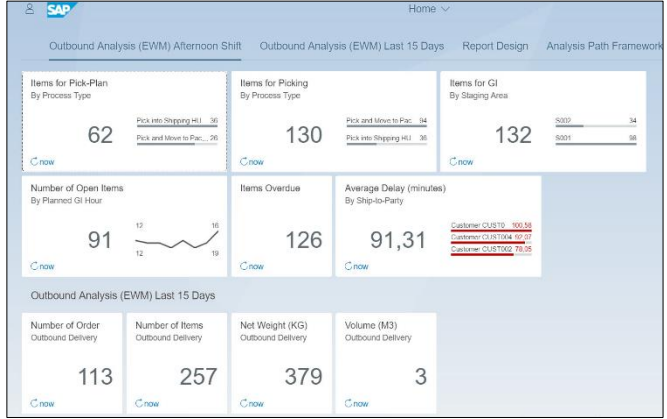
COMPREHENSIVE STOCK AND PROCESS TRANSPARENCY FROM REPORTING TO EXECUTION

KPI Dashboard



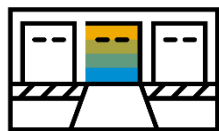
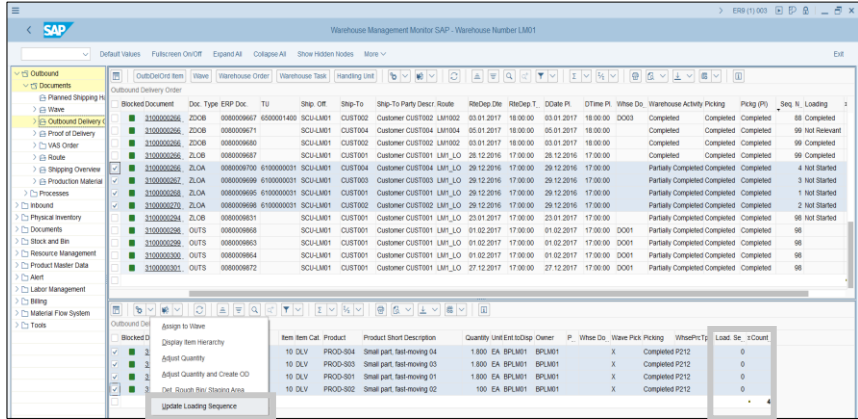
90 Standard KPIs

CDS views



33 CDS views

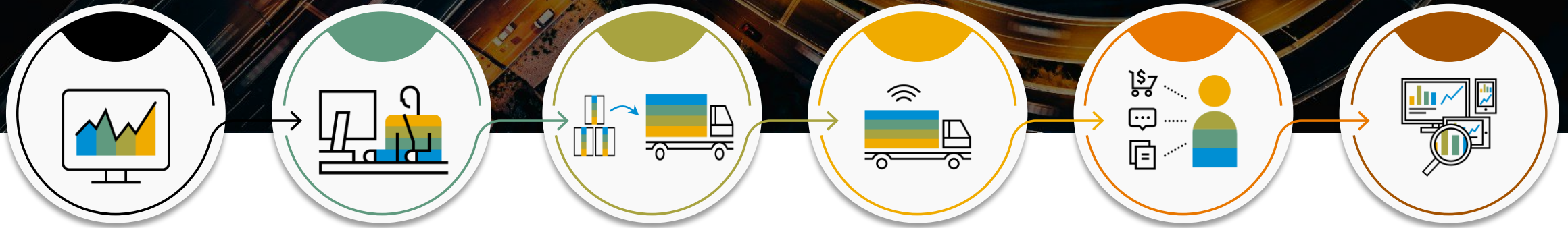
Warehouse monitor



465 Standard reports

SAP S/4HANA Supply Chain for TM

Overview



Strategic Freight
Management

Order
Management

Transportation
Planning

Transportation
Execution

Freight Costing
and Settlement

Analytics and
Reporting

SAP TM OUT OF THE BOX INTEGRATION

WITH SAP SOLUTIONS



Sales & Procurement



- Sales, purchase, returns, & STOs, Scheduling Agreements



Logistics Execution



- Warehouse planning & execution (EWM)
- Delivery & shipment processing



Environment
Health & Safety



- Compliant dangerous goods shipment



Global Trade Services



- International trade regulation compliance
- Customs export processing



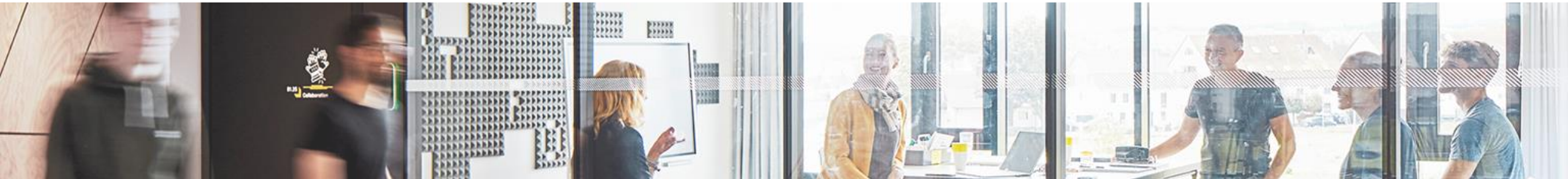
Financial
Management



- Carrier invoice verification & payment/self-invoicing
- Sales order profitability & material valuation

3

DEPLOYMENT-STRATEGIES DIGITAL SUPPLY CHAIN



SAP Extended Warehouse Management

Solution strategy



Functional

- Continuous core improvement for SCE
- New industry capabilities
- Enhanced user experience



Integration

- Enhanced SCE platform integration
- Enhanced integration with SAP S/4HANA



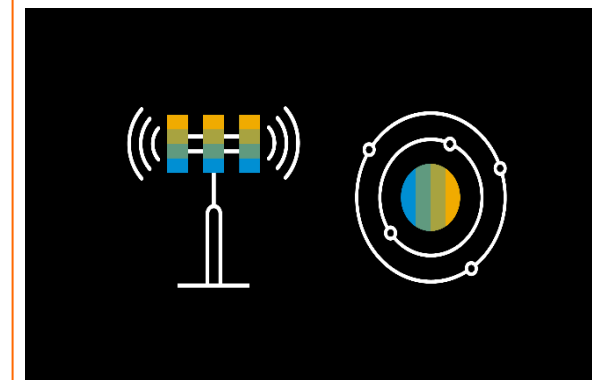
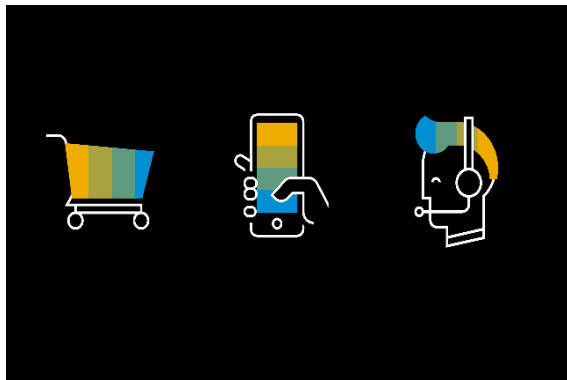
Deployment

- SAP EWM embedded in SAP S/4HANA
- SAP EWM standalone, connected to ECC or S/4HANA
- SAP EWM in Cloud



IoT

- Next-generation automation and robotics
- Enhanced device and asset connectivity
- Integration with wearable devices add new layer of visibility

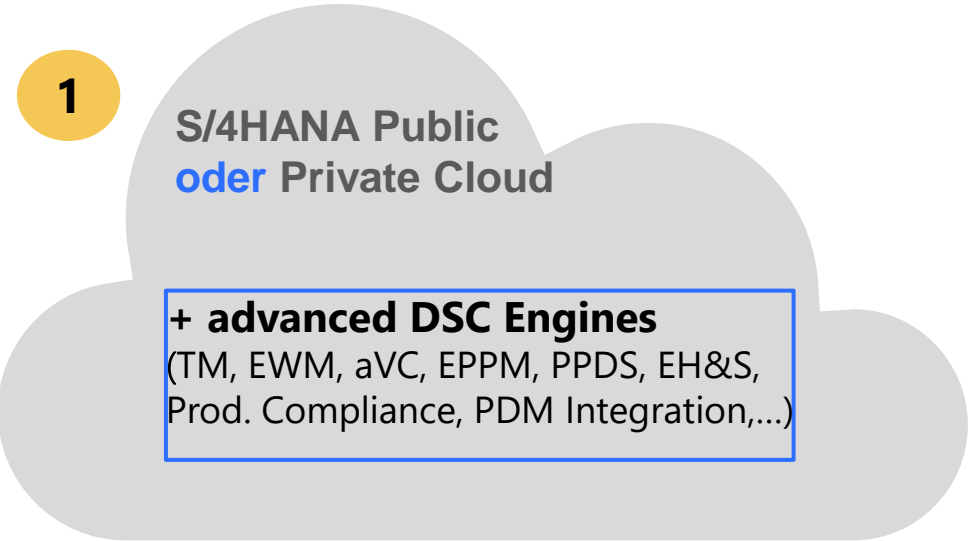


Rise with SAP & Digital Supply Chain – Deployment options



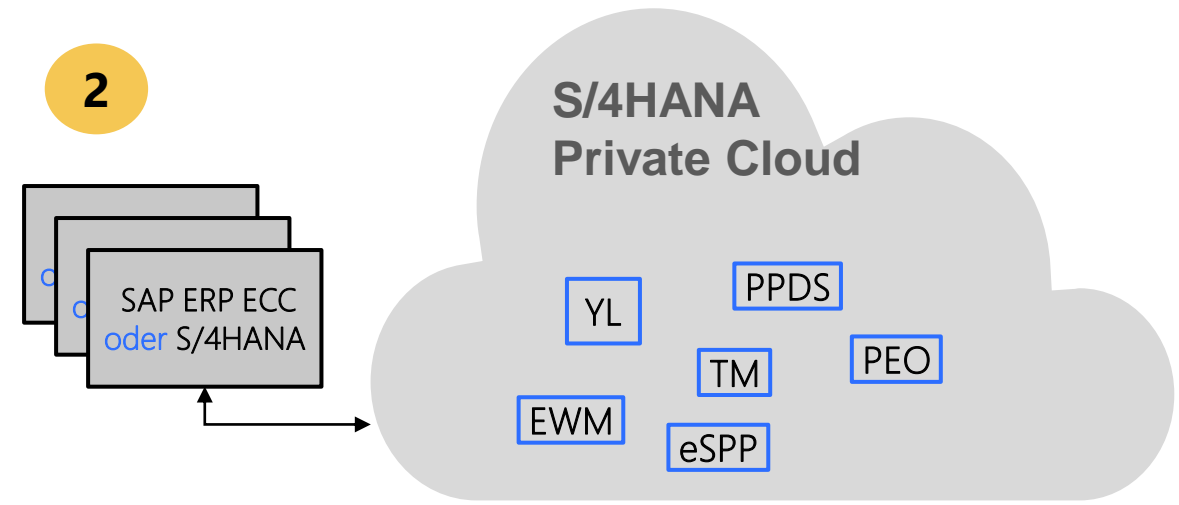
RISE WITH SAP | Driving business innovation together

RISE Core



- Wertbeitrag durch embedded DSC engines
- Starterpakete Nutzung BTP
- Conversionansatz:
 - Integrierte Prozessinnovationen & UI
 - Ggf. Nutzung Stock Room Management parallel

PCE Side-Cars („DSC S/4 Edition“)



- Wertbeitrag durch sep. Umstellung DSC-Solutions
 - Stabilität ERP ECC und Kernprozesse
 - Profitieren von DSC-Neuerungen
 - Neue Betriebs- und Updatemöglichkeiten

Digital Supply Chain – 2 beispielhafte Szenarien Conversion



1. Umstellung SAP ECC mit WM und LE-TRA inkl. Z-Eigenprogrammierung Transportoptimierung

- WM kompatibel mit S/4 Stock Room Management Lizenzierung?
- Lagerautomatisierung im Einsatz?
- LE-TRA Anforderung abbildbar mit SAP TM bzw. Advanced Shipping & Receiving?
- LE-TRA Integration weiternutzen bis 2030? Integration EWM möglich?
- EWM-Standardfunktionalitäten inkl. Prozessvereinfachungen in S/4 Core vorteilhaft?

2. Umstellung SAP ECC mit WM zur Produktionsversorgung und EWM 9.5. als europ. Distributionslager

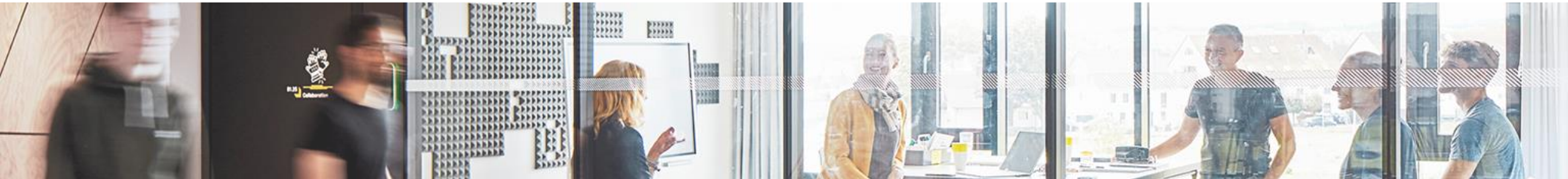
1. EWM-Produktionsversorgung in S/4 Core vorteilhaft?
2. S/4 Stock Room Management für produktionsnahe Handlager weiternutzen?
3. Migration EWM 9.5. auf S/4 embedded (advanced) oder S/4 decentral, extra Stack?
4. Side-Car-Ansatz für EWM 9.5. auf S/4 EWM inkl. Ausprägung Template Prozesse?



Empfehlung: Conversion-Szenarienbewertung zur Optimierung der digitalen Transformation der Supply Chain Prozesse.

4

SAP S/4 PUBLIC CLOUD & DIGITAL SUPPLY CHAIN



SAP S/4HANA Cloud & Digital Supply Chain Solutions

based on
[Feature Scope Description 2202](#)



SAP S/4HANA Cloud Supply Chain

Plan to Fulfill

Inventory

Physical Inventory <ul style="list-style-type: none"> Inventory Counting Cycle Counting Scheduled Document Creation Situation Handling 	Inventory Analytics and Control <ul style="list-style-type: none"> Inventory Overview Stock Analysis Throughput Analysis Dead Stock Analysis Slow- / Non-Moving Stock Analysis and Prediction 	Goods Movement <ul style="list-style-type: none"> Goods Receipt In-Plant Stock Transfer Cross-Plant Stock Transfer Stock-in-Transit Monitoring / Prediction Manual Reservations
-----------------------------------------------------------------------------------------------------------------------------------------------------------------------------------------	---------------------------------------------------------------------------------------------------------------------------------------------------------------------------------------------------------------------------------------------------------	-------------------------------------------------------------------------------------------------------------------------------------------------------------------------------------------------------------------------------------------

Inventory Manager, Inventory Analyst, Plant Manager

Warehousing

Warehouse Management <ul style="list-style-type: none"> Inbound Processing (incl. Quality Mgmt.) Outbound Processing (incl. Ad Hoc GI) Production Supply (incl. Kanban) Production Receipt (incl. Repetitive) Posting Changes (incl. Replenishment) Resource Management Third-party WMS Integration** 	Extended Warehouse Mgmt.**
-----------------------------------------------------------------------------------------------------------------------------------------------------------------------------------------------------------------------------------------------------------------------------------------------------------------------------------------------------------------------------------	-----------------------------------

Warehouse Clerk, Warehouse Operator, Shift Supervisor

Order Promising

Available to Promise

- Availability Check
- Back Order Processing

Order Fulfillment Manager, Specialist

Delivery and Transportation

Delivery Management <ul style="list-style-type: none"> Delivery Creation Delivery Scheduling Delivery Packing Delivery Monitoring Goods Issue 	Transportation Management <ul style="list-style-type: none"> Freight Unit Creation Freight Order Planning Charge Management Freight Settlement
---------------------------------------------------------------------------------------------------------------------------------------------------------------------------------------------------------	-------------------------------------------------------------------------------------------------------------------------------------------------------------------------------------------------

Receiving Specialist, Shipping Specialist, Transportation Buyer, Planner, Manager

Logistics Material Identification

Serial Number Management <ul style="list-style-type: none"> Serial Number Profiles Serial Number Creation Serial Number Tracking 	Batch Management <ul style="list-style-type: none"> Batch Master Creation Batch Master Changes Batch Monitoring 	Handling Unit Management <ul style="list-style-type: none"> Handling Unit Creation Handling Unit Monitoring Manual / Automatic Packing Situation Handling
--------------------------------------------------------------------------------------------------------------------------------------------------------------------------	---------------------------------------------------------------------------------------------------------------------------------------------------------	------------------------------------------------------------------------------------------------------------------------------------------------------------------------------------------------------------

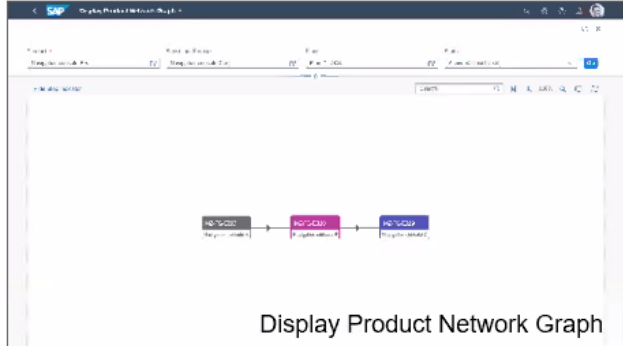
Master Data Specialist

Advanced Order Promising

Advanced Available to Promise*

- Product Allocation
- Alternative-Based Confirmation
- Release for Delivery
- Supply Protection

Order Fulfillment Manager, Specialist



SAP S/4HANA Business Benefits¹

10%-15% reduction in revenue loss due to stock-outs

10%-12% reduction in total logistics cost

10%-15% reduction in order lead times

25%-30% reduction in inventory levels

10%-30% increase in on-time delivery

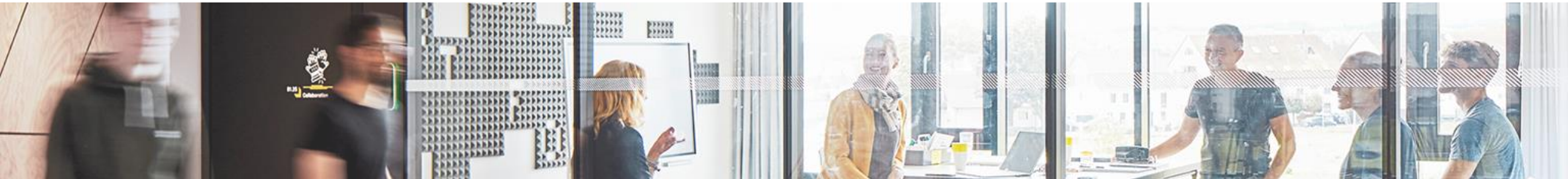
* Additional subscription

** Additional subscription and separate setup

¹ Benefits are conservative outside-in estimates of the benefits of moving from a traditional ERP system to enhanced SAP S/4HANA with line-of-business and cloud capabilities. As each enterprise is at a different level of maturity, our recommendation is that you

5

TAKE AWAYS



**IM CONVERSIONANSATZ SIND DIE
DEPLOYMENTOPTIONEN FÜR EWM & TM
EXPLIZIT ZU BEWERTEN.**

**DSC SETZT AUF 2 SÄULEN:
S/4 INTELLIGENT SUITE UND SAP BTP (EXTENDED
FUNCTIONALITIES, INDUSTRY CLOUD)**

**S/4 PUBLIC CLOUD & DSC ZUNEHMEND
ATTRAKTIV FÜR STANDARDISIERTE,
EINFACHE LOGISTISCHE SZENARIEN.**

**TAKE
AWAYS**



VIELEN DANK!

IHRE

FRAGEN?



<https://bit.ly/3sY0MRz>

HIER FINDEN SIE:

- die Präsentationsunterlagen
- ab morgen die Aufzeichnung des Vortrags
- weiterführende Informationen

Sie erhalten den Link am Freitag auch per E-Mail.



KONTAKT

MATTHIAS MARTENS

DIRECTOR SUPPLY CHAIN
ALL FOR ONE GROUP SE

T +49 2301944792

M +49 1724591782

Matthias.Martens@all-for-one.com